

Specifications

Power

12 VDC @ 330mA
24 VDC @ 170mA

Storage Temperature

-40°F to 156°F (-40°C to 70°C)

Operating Temperature

-21°F to 156°F (-30°C to 70°C)

Humidity

0-100% non-condensating

ESD Immunity

EN61000-4-2

Warranty

Your Control Solution's Provider sole and exclusive warranty regarding the Remote Monitoring Systems is such that services provided directly by them shall perform in conformity with standard industry practices. A two-year limited warranty on all equipment will be provided.

Radiated Immunity

EN61000-4-3

EFT/Burst Immunity

EN61000-4-4

Conducted Immunity

EN61000-4-6

Radiated Emissions

FCC Part 15 - Class A
EN61326-1:2006 Class A
EN55011:2007+A2:2007 (CISPR 11)



ID# R17GE864



I-Link[®]

www.ecosmartpanel.com/ilink.html

©SJE-Rhombus 08/11



Discover the Advantage of I-Link® Remote Monitoring

Get the Best of Two Technologies
in One Convenient Package

- I-Link® Cellular RTU
- I-Link® Web Portal



Wastewater

- Pump Lift Stations
- Pumping Applications
- Stormwater
- Water Ways
- Flow Meters



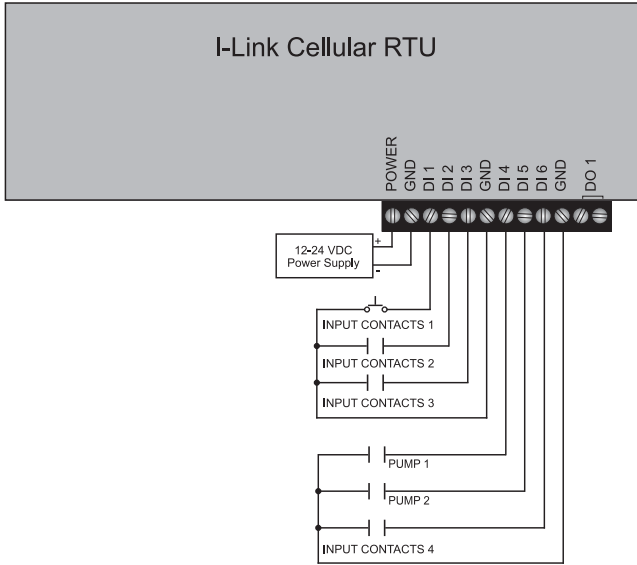
Water

- Wells
- Tanks
- Booster Stations
- Level and Flow
- Irrigation

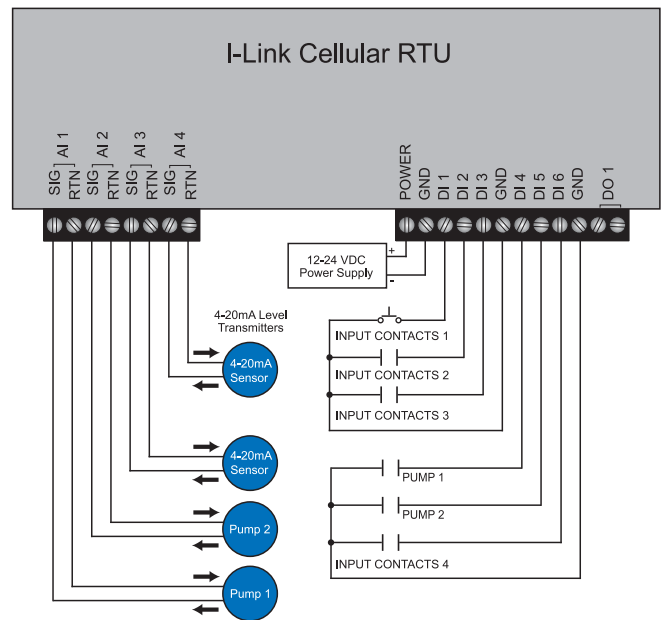
Other Industrial Applications

I-Link® Wiring Diagrams

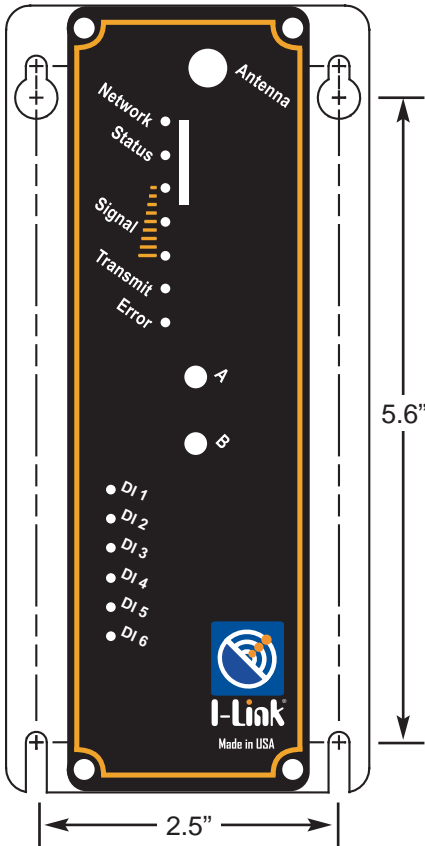
Basic Wiring - Digital Inputs



Advanced Wiring - Analog Inputs (I-Link® 200 only)

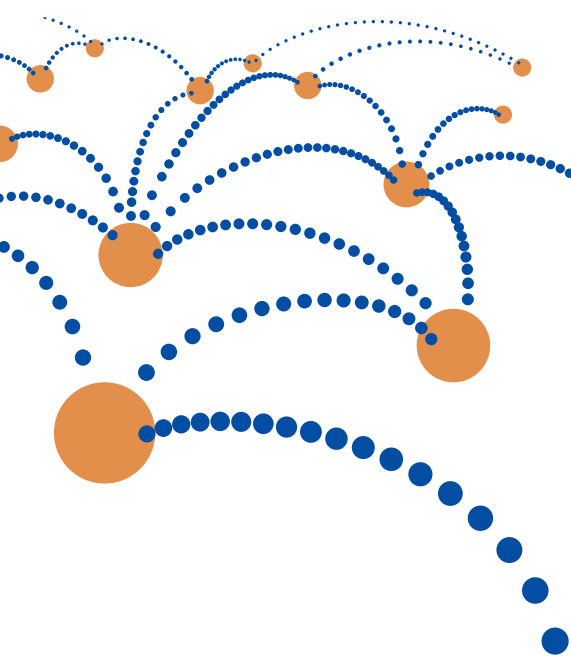


I-Link® Dimensions



I-Link® 100/200

I-Link® Retro 100/200



I-Link® Cellular RTU is a remote monitoring system using an integral cell-based communications gateway to provide **two-way communication** for monitoring pump lift stations and other pumping applications.

The system consists of the I-Link® 100 or 200 Cellular RTU hardware interface and customized data access through the I-Link® Web Portal. The web portal provides **real-time system information**, including monitored equipment, administrative services, report generation and alarm notifications.

Both models (I-Link® 100 or 200) can be mounted directly in a control panel for new installations or ordered for retro fit in a self-contained weatherproof enclosure (I-Link® Retro 100 or 200).

In addition to the standard digital input alarming features of the I-Link® 100, the I-Link® 200 model provides analog inputs (4-20mA) for each digital pump input to monitor pump current and (2) configurable 4-20mA analog inputs to monitor continuous tank levels or other analog sensors.



- **I-Link® 100**

Designed for new systems requiring digital inputs only

- **I-Link® 200**

Designed for new systems requiring digital and analog inputs

- **I-Link® Retro 100**

Designed for retro fit systems requiring digital inputs only

- **I-Link® Retro 200**

Designed for retro fit systems requiring digital and analog inputs